

# GO2cam

cam for workshops

GO2cam is a comprehensive high-end CAM solution for milling, turning and wire EDM.

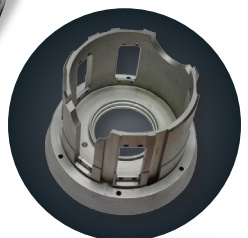
## GO2Cam's Turning Software



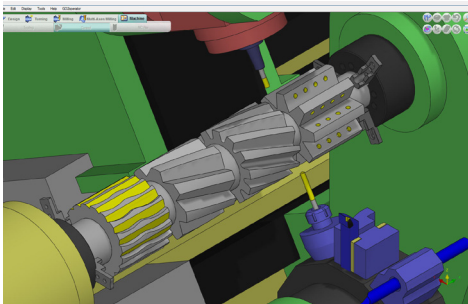
**GO2cam Turn is a CAM for 2-5 axis milling, combining power and ease of use.**

GO2cam International was founded in 2009, by a pioneer team in CAM software development. **Our mission is to provide specific CAM solutions to simplify the NC programming.**

GO2cam International offers mechanical solutions designed with same guidelines that make our success in other markets: **innovation, accessibility and R&D reactivity.**



## Technical characteristics

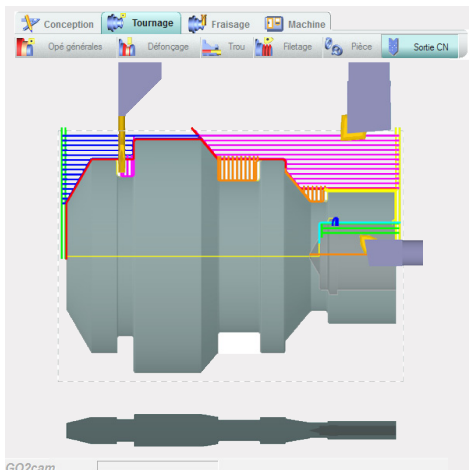


### → CAD

- Open native CAD files
- Holes
- Topology
- Tolerancing
- Parametric functions Wireframe and Solid

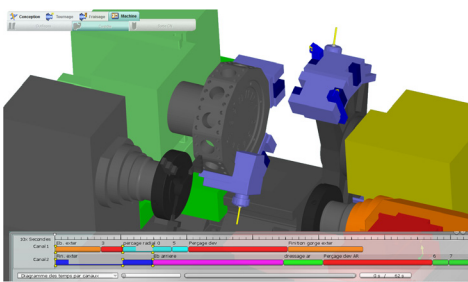
### → CAM

- Milling 2X-5X simultaneous
- Save expertise (operation list, tools)
- Stock management
- Time calculation
- Machine-tool environment (MTE) simulation
- Workshop Documents: pdf, xls



### → TOOLPATH

- Facing / Boring / Groove / Drilling
- Pecking
- Parting
- Chamfering toolpaths
- Milling Cycles



### → ENVIRONMENT

- Machine element management (steady rests, tailstock, reworking spindle,...)
- Synchronization
- Multi turret / Dual spindle
- Complex tool

**GO2cam**  
INTERNATIONAL

6 Place des Terreaux 69001 Lyon - France  
+33 4 72 27 06 64 ▪ sales@go2cam.net

[www.go2cam.net](http://www.go2cam.net)